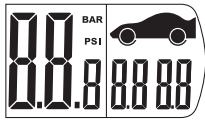


EXTEND THE LIFE OF YOUR TIRES!

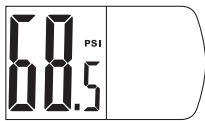
Measuring Tire Pressure

Measuring the Tire Pressure without PRESET GOAL

1. Press "SET" button to active all digits until "0.0" appears (Default unit of measure is PSI).



2. Push Nozzle of gauge on to tire Valve. Make sure a good seal is made between the nozzle and the valve stem so that no hissing sound of escaping air is heard.
3. Hold Gauge on valve stem until reading is locked on the display.



4. Remove the tire gauge from the valve stem. The reading displays for 10 sec, then the gauge will automatically goes to "0.0" for 10 sec and then turns off.

How to set GOAL

1. Press "SET" button to active all digits until "0.0" appears (Default unit of measure is PSI).
2. Press and hold "SET" button for 3 seconds to enter setting mode. The unit "PSI" appears and blinks. Press "▲/▼" button to switch between PSI and BAR. Then press "SET" button to confirm.
3. Default Front Tire or Rear Tire lights up and blinks. Press "▲/▼" button to switch between Front and Rear tire. Press "SET" button to confirm.
4. Press "▲/▼" button to change target number and press "SET" button to confirm.
5. The second tire lights up. Press "▲/▼" button to change the target number and press "SET" button to confirm.
6. Unit of Measurement and target numbers for both tires light up and stay for about 2 seconds.

7. The Pressure gauge has been programmed, the display will go back to "0.0" and gauge is ready for use.

Measuring the Tire Pressure with PRESET GOAL

1. Press "SET" button to activate all digits until "0.0" appears. Press "▲/▼" button to choose between Front and Rear tires. Target number will be shown.
2. Push Nozzle of gauge on to tire valve. Make sure a good seal is made between the nozzle and the valve stem so that no hissing sound of escaping air is heard.
3. Hold Gauge on valve stem until reading is displayed and locked.
4. Remove the tire gauge from the valve stem. The reading stays on the display for 10 sec, then the gauge will automatically goes to "0.0" for 10 sec and then turns off.

Operating White LED Flashlight

The White LED flashlight can be turned on by just pressing/holding the light button. The flashlight will be turned off once the light button released.

Helpful Hints

- Always be sure to follow the tire manufacturers recommended tire pressure ratings which are based on "cool" tire temperatures.
- To clean the gauge, use a soft damp cloth. Do not immerse in, or spray with water or other liquid cleaners.

Replacing the Batteries

1. The batteries are housed in tail section of unit, The tail section of unit is secured to the body by a small Philips Screw, remove the screw and pull out the tail piece, remove the old button cell and insert two new CR2032 button cell batteries, replace the rubber end.
2. Replace the screw and turn it clockwise and screw tightly.

What to do if

- You do not get any reading at all (either blank display or all zeros)
 - a) See the instructions and follow them carefully.
 - b) If gauge still does not work, see Warranty and Service section.
- You observe an unusually high and low reading
 - a) Make sure a good seal is made between the nozzle and the valve stem so that no hissing sound of escaping air is heard.
 - b) Make sure you are checking the pressure on cool tires which have not been driven on for several hours.

Warranty and Service

Measurement Ltd., Inc warrants this gauge against defects in material of workmanship for a period of five (5) years from the date of purchase and agrees to replace it free of charge. This warranty does not cover damage resulting from misuse or abuse of the product. Should your gauge require service, you may send it back to Measurement Ltd., Inc for repair or replacement.

Our authorized service center address is:

Measurement Ltd., Inc.
2001 Route 46, Suite 310,
Parsippany, NJ 07054
Attn: Customer Service



Measurement Ltd., Inc.
www.measurement-ltd.com

Printed in China