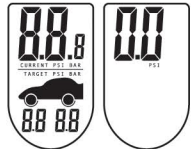




Tire Gauge with Bleed Valve

Pressure measurement without Preset Goal

1. Press SET, all digits light up then "0.0" appears. Default unit of measure is PSI.



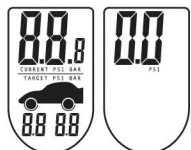
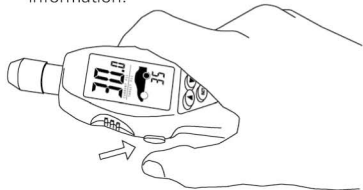
2. Push nozzle of gauge on to tire valve.
3. Hold gauge on valve stem until the pressure reading is displayed and locked.



4. Remove the tire gauge from the valve stem. The reading displays for about 10 seconds, then the gauge will automatically revert to "0.0" for 10 seconds, then turns off.

Pressure measurement without Preset Goal with bleed function

1. Press SET, all digits light up then "0.0" appears. Default unit of measure is PSI, here is a sketch of bleed button for information.



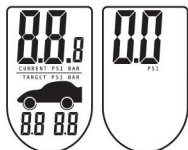
2. Push nozzle of gauge on to tire valve.
3. Hold gauge on valve stem when the pressure is reading is and locked.
4. If the pressure reading is higher than expected, user can press and hold bleed button to release air. The LCD will flash "bL". Release bleed button to get the actual pressure in tire from LCD.



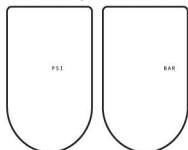
5. When desired pressure level is reached remove gauge from valve stem. The reading displays for about 10 seconds, then the gauge will automatically revert to "0.0" for 10 seconds, then turns off.

Goal Setting

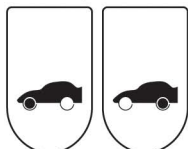
1. Press SET to power on the gauge, all digits light up then "0.0" appears on the display.



2. Press and hold SET for 3 seconds to enter setting mode. The unit "PSI" or "BAR" appears and blinks. Press up or down to switch between PSI and BAR. Then press SET to confirm.



3. Default front tire or rear tire lights up and blinks. Press up/down to switch between front and rear and press SET to confirm.



4. Press up▲ or down▼ to change target number and press SET to confirm. (Default target setting reads 32 PSI for the front and 28 PSI for the rear tires).



5. The second tire lights up. Press up/down to change the target number and press SET to confirm.



6. Unit of measurement and target numbers for both tires light up and stays displayed for about 2 seconds.

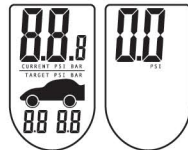


7. Display goes to "0.0".



Pressure Measurement with Preset Goal

1. Press SET to power on the gauge, all digits light up and the "0.0" appears on the display.



2. Press Up▲ or Down▼ to choose between front and rear tires.



3. Push nozzle of gauge on to tire valve.
4. Hold gauge on valve stem until reading is displayed and locked.



5. Release bleed button to get actual pressure in tire. If target pressure is not reached, press bleed valve again. Repeat this action until desired pressure is reached.



6. The pressure reading stays on the display for about 10 seconds, then the gauge will automatically revert to "0.0" for 10 seconds, then turns off. Before gauge turns off, follow above instruction to measure pressure of the second tire.

7. When tire gauge is over ranger more than 100psi, the display shows "E".



Helpful Hints

- Always be sure to follow the tire manufacturer's recommended tire pressure ratings which are based on "cool" tire temperatures.
- To clean the gauge, use a soft damp cloth. Do not immerse in, or spray with water or other liquid cleaners.

Maintenance - replace the batteries

Remove battery cover. Remove the old batteries and insert 2 new CR2032 lithium batteries. Replace the battery cover.

Warranty and Service

Measurement Ltd., Inc warrants this gauge against defects in material of workmanship for a period of one (1) year from the date of purchase and agrees to replace it free of charge. This warranty does not cover damage resulting from misuse or abuse of the product. Should your gauge require service, you may send it back to Measurement Ltd., Inc for repair or replacement.



Customer Enquiries: US: 001 973 402 4240

Michelin and the Tire Man (Bibendum) are trademarks used with permission from the Michelin Group

Distributed under licence by:
Measurement Ltd., Inc.

11751 Rock Landing Drive Suite H-7 Newport News, Virginia 23606 U.S.A.
www.measurement-ltd.com

©2009 Michelin
www.michelin.com

Printed in China

**1 Year
Warranty**

This device complies with Part15 of the FCC Rules. Operation is subject to the following two conditions: (1) this device may not cause harmful interference, and (2) this device must accept any interference received, including interference that may cause undesired operation.

Note:

This equipment has been tested and found to comply with the limits for a Class B digital device, pursuant to Part 15 of the FCC Rules. These limits are designed to provide reasonable protection against harmful interference to radio communications. However, there is no guarantee that interference will not occur in a particular installation. If this equipment does cause harmful interference to radio or television reception which can be determined by turning the equipment off and on, the user is encouraged to try to correct the interference by one or more of the following measures:

- Reorient or relocate the receiving antenna.
- Increase the separation between the equipment and receiver.
- Connect the equipment into an outlet on a circuit different from that to which the receiver is connected.
- Consult the dealer or an experienced radio/TV technician for help.

Caution:

Any changes or modifications not expressly approved by Measurement Ltd., Inc, the manufacturer of this product and the party responsible for compliance could void the user's authority to operate the equipment.

Ce dispositif est conforme au chapitre 15 du règlement FCC. Son utilisation est soumise aux deux conditions suivantes: (1) Cet équipement ne doit pas causer d'interférences nuisibles, et (2) Cet équipement doit accepter toutes les interférences reçues, y compris celles susceptibles d'entraîner un fonctionnement non désiré.

Note:

Cet appareil a été testé et jugé conforme aux normes des appareils numériques de Classe B, conformément aux Règles FCC, paragraphe 15. Ces normes sont conçues pour donner une protection raisonnable contre les interférences dans une installation résidentielle. Cet appareil génère, utilise et peut émettre de l'énergie radio-fréquence et, s'il n'est pas installé et utilisé comme décrit dans les instructions, il peut causer des interférences nuisant aux communications par ondes radio. Toutefois, il n'y a pas de garantie que des interférences ne se produiront pas dans

MN-4535B

une installation particulière. Si cet appareil provoque des interférences sur les réception d'une radio ou d'une télévision, ce qui peut être déterminé en mettant l'appareil sous tension et hors tension, l'utilisateur est encouragé à essayer de corriger les interférences par l'une ou plus des mesures suivantes:

- Réorientez ou déplacez l'antenne de réception.
- Augmentez l'espace entre l'appareil et le récepteur.
- Branchez l'appareil à une prise murale différente de celle du circuit auquel le récepteur est branché.
- Consultez votre revendeur ou un technicien expérimenté en radio/TV pour obtenir de l'aide.

Attention:

Tout changement ou modification qui n'est pas expressément approuvé par Measurement Ltd., Inc, le fabricant de ce produit et la partie responsable pourrait entraîner le retrait de l'utilisation de l'appareil.

Este dispositivo cumple con la Sección15 de las Normas de la FCC. Su funcionamiento está sujeto a las siguientes dos condiciones: (1) este dispositivo no puede causar ninguna interferencia perjudicial y (2) este dispositivo debe aceptar cualquier interferencia que reciba, incluso interferencia que pueda causar un funcionamiento no deseado.

Nota:

Este equipo ha sido probado y se determinó que cumple con los límites para un dispositivo digital de Clase B, según el Apartado 15 de las Reglas de la DEFCFC. Estos límites están diseñados para proporcionar protección razonable contra interferencia dañina en una instalación residencial. Este equipo genera, utiliza y puede emitir energía de radio frecuencia y, si no se instala y utiliza de acuerdo con la instrucciones, puede causar interferencia dañina a las radio comunicaciones. Sin embargo, no se garantiza que la interferencia no vaya a ocurrir en una instalación en particular. En caso de que este equipo sí cause interferencia dañina a la recepción de radio o televisión, lo cual puede determinarse apagando y encendiendo el equipo, se sugiere al usuario que trate de corregir la interferencia mediante una o más de las siguiente medidas:

- Reoriente o cambie de lugar la antena receptora.
- Aumente la distancia entre el equipo y el receptor.
- Conecte el equipo a una toma de corriente distinta a la que esta conectado el receptor.
- Consulte al distribuidor o pida ayuda a un técnico experto en radio/TV.

Precaución:

En caso de cualquier cambio o modificación no aprobada expresamente por Measurement Ltd., Inc, tanto el fabricante de este producto como la parte responsable de llevarla a cabo, podrían anular la autoridad del usuario para operar el equipo.